

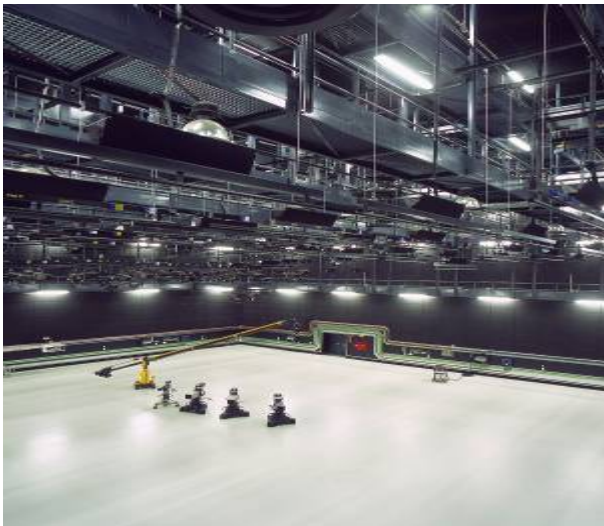
RTP – RADIO TELEVISÃO PORTUGUESA, PT



CDM “Box-in-the-box” Solution

CDM-ISO-LAT & CDM-ISO-QR “Special”

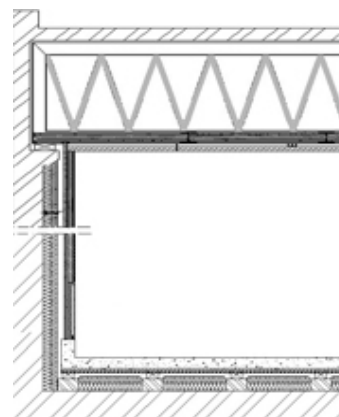
Job type	Box – in – the - box isolation systems
Location	Lisbon (Portugal)
Quantity	4 studios (800m² - 400m² - 200m² - 100m²)
Client	RTP
Architect	Frederico Valsassina Arquitectos, Lda
Contractor	Teixeira Duarte
Acoustical Consultant	Certiprojecto Arquitectos E Engenheiros Consultores, Lda.
Execution	2006



The challenge consisted in the making of a new headquarter for the RTP public television facilities at the “Avenue Marechal Gomes da Costa” in Lisbon, using the latest production studio techniques available.

The main acoustical issue consisted in the fact that the the four studios, the main offices, the RTP museum and the main T.V. & Radio archive libraries were all put together in the same building on the one hand, and that the building itself was situated directly next to an intensely used avenue (close to the “Portela International Airport”) on the other hand.

To increase the acoustical isolation, the contractor chose to install a special CDM-ISO-LAT solution, based on CDM-80 corkrubber, having a thickness of 60mm and 80mm, and with a pad surface of 180x150mm². This was necessary to obtain a resonance frequency as low as approx. 7Hz. Next to that, also a special CDM-ISO-QR wall tie was used, based on CDM-95, to ensure a decent wall decoupling.



CASE STUDY – CDM-ISO-BUILDING